



Dream Report – Version 4.7 Release 1



New Markets & Applications

Statistical Process Control

- Time Based SPC
- Sample Based SPC
- SPC Calculations on Any Data Source

Schneider Electric Citect Connectivity

- Working with Schneider on Development
- Real-Time Alarms and Values
- Native History Alarms and Values
- Citect Historian Alarms and Values

Yokogawa Smart Recorders

- Working with Yokogawa on Development
- Real-time Connectivity (Modbus)
- History Messages
- History Values
- History Batch Data

Internet of Things via OPC UA

- OPC UA Real-time Data

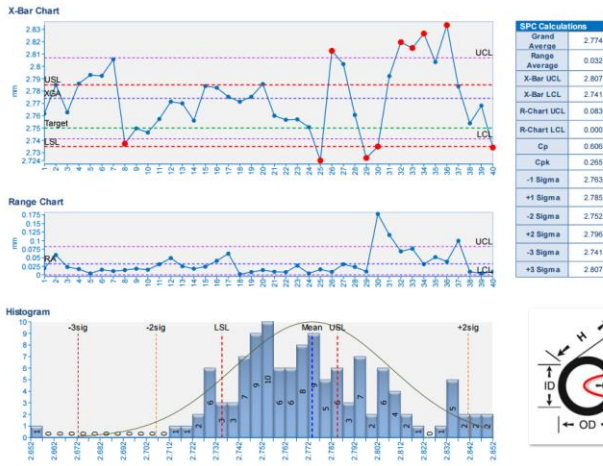
Version 4.7 New Features

- Statistical Process Control Calculations and Charts
- Tag Selection and Organization – Data Models
- Web Portal Tree Browser – Data Model Access
- Web Portal – Check Box Object
- Web Portal – Multi-Line Editing
- Web Portal Raw Data Access – Table, Chart, Export
- Hyperlinks for Drilldown Reports
- Hyperlinks Pass Tags, Date, Time Context
- Higher Performance Runtime Management Console
- New and Improved RMC ActiveX Control
- Vertical Charts (Strip Chart Output)
- Optional SharePoint Integration – Index Reports
- New LUA Script Editing
- LUA Script Stored Procedure Execution
- Dynamic Tokens in Source Selections
- Step Table Steps on Value Change
- Enhanced DSN – Easier Database Connections
- New Output Formats – A0, A1, A2
- Object Position Control by LUA Script
- OPC UA – Secure Real-Time Internet Connectivity
- Windows 10 Support

The Dream Report Value Proposition

The Reports and Information Distribution You Want, Not Just the Ones You Need

Other reporting and information sharing solutions are so difficult to set up and maintain that you only focus on the reports and data dashboards that are absolutely necessary. Dream Report changes the paradigm. With Dream Report, reports and interactive dashboards are so easy, you'll be generating and sharing all the reports you've ever wanted, and that's good for your business. Dream Report - Taming that ocean of data.

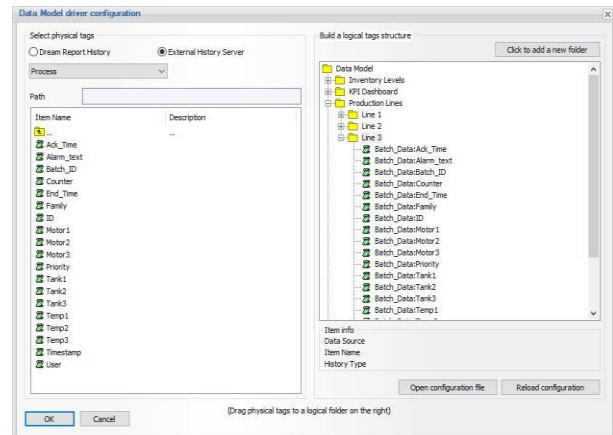


Powerful New SPC Capability

- X-Bar Chart
- R-Chart
- S-Chart
- Histogram
- Data Tables
- LCL, UCL, Cp, Cpk, +/- 1 Sigma, +/- 2 Sigma
- Westinghouse Electric – 8 Nelson Rules

Tag Organization and Models

- Select Tags for Organization
- Arrange Tags in Groups
- Display Only Tags Users Need
- Alias Tags for Ease of Use
- Model Tags as ISA S95
- Organize Tags by Equipment Model



NEW – Hyperlinks to Drill-Down Reports and Dashboards

Internal Hyperlink Parameters Configuration Dialog

NEW – Web Report Raw Data Displays

Faster Access to Knowledge

The block contains three screenshots. The first is a configuration dialog for 'Internal Hyperlink Parameters' with fields for 'Report List', 'Batch Report', 'Data Source', and 'Instance Name'. The second is a 'CURRENT BATCH' table for 'Tank 1 Avg. Temp' showing a list of timestamps and values. The third is a 'CURRENT BATCH' line chart for 'Tank 1 Avg. Temp' showing a fluctuating trend over time.

Web Portal Data Analysis

- Raw Data Access – Table, Trend, Export
- Tree Selector for Data Models
- Multi-Line Tag Editing
- Checkbox Selector
- Hyperlink for Drilldown Reporting
- Hyperlink Passing of Tag and Date/Time Context

Dream Report - Reporting So Easy, You Can Finally Get All the Compliance and Performance - Reports and Dashboards that You Want!